

SUSTAINABILITY REPORT

2022-2023

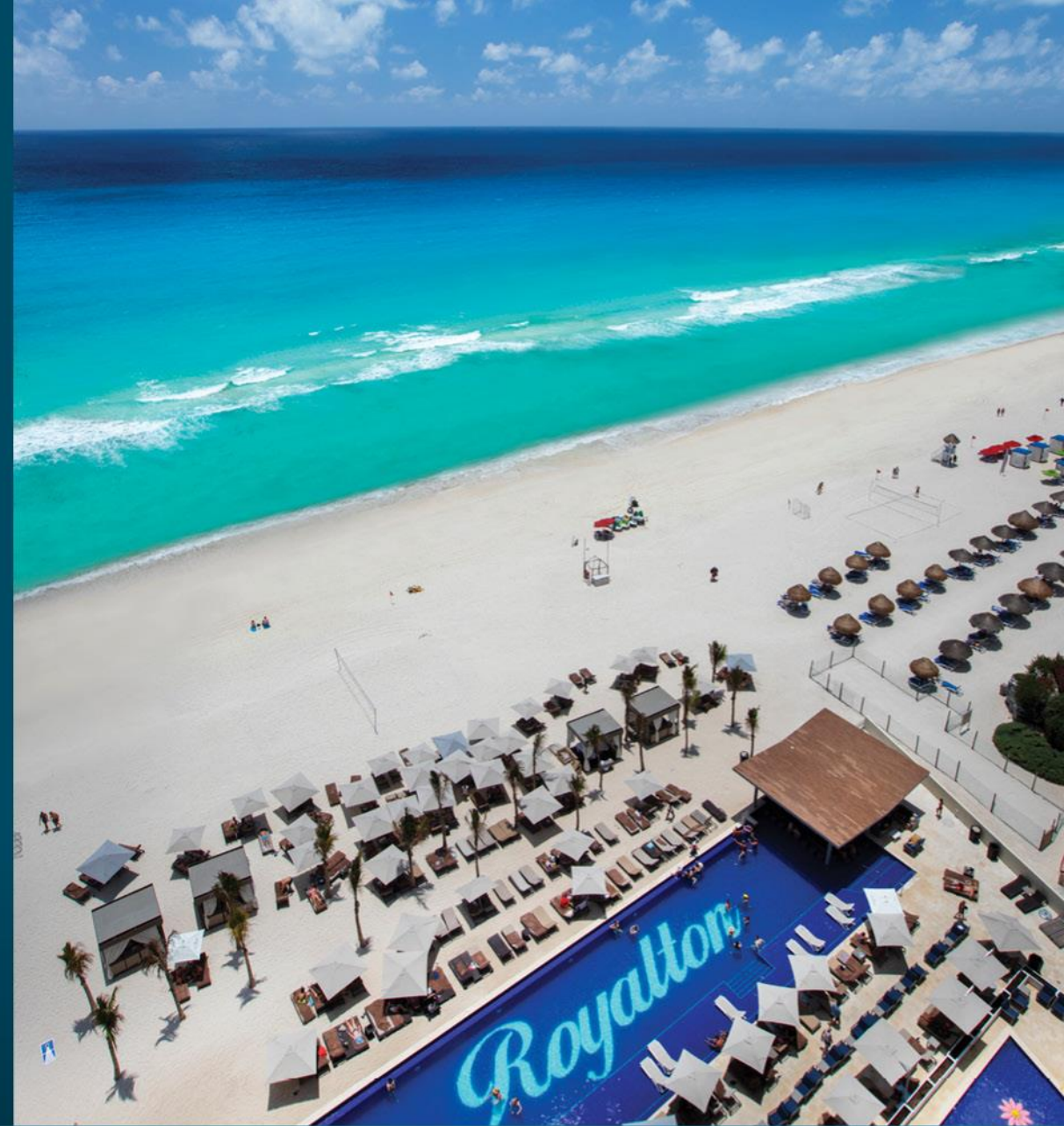
VIVA LA EXPERIENCIA
ALL-IN LUXURY®

Royalton
CHIC Punta Cana



CONTENT

Executive Summary	3
Sustainability Policy	4
Management of sustainable practices	5
Resources	6
Waste Management	7
Summary of activities	8
Vision 2024	10

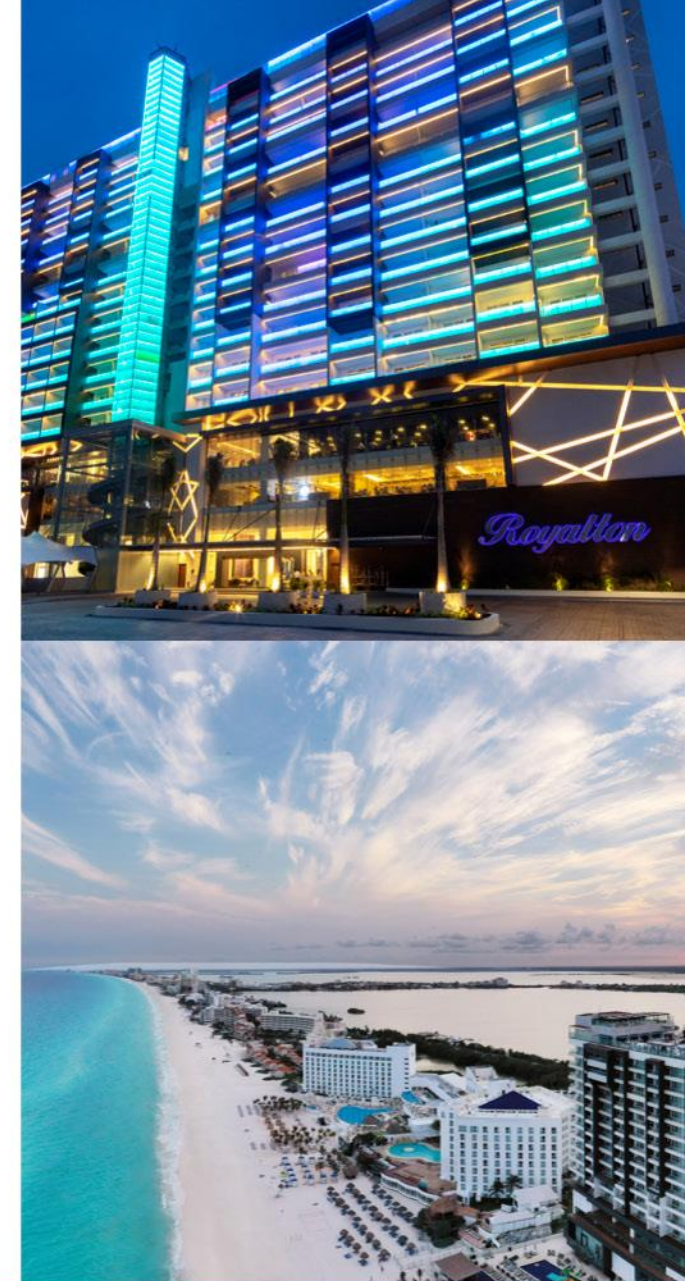


EXECUTIVE SUMMARY

Royalton Chic Punta Cana, an Authograph Collection All Inclusive Resorts, have shown improvement in the performance of activities and environmental aspects.

Since its inception, the Hotel has shown commitment to continuous improvement, demonstrating that it plays a stellar role in its operations and that when it reopens its doors at the end of 2021, it continues to maintain high standards in processes related to sustainability through prevention. of pollution, environmental protection, care for biodiversity, respect for human rights, as well as promoting and supporting the local community in all possible ways within the organization's area of influence.

Royalton Hotels aims to make a positive and lasting difference in the lives of people, the environment and the community. With the support of guests, hosts and members of the community, the property works hard to protect, respect and promote knowledge of the cultural heritage and customs of the Dominican Republic.



CORPORATE SUSTAINABILITY POLICY

At Blue Diamond Resorts (BDR) we are committed to Sustainable Development through the operation of the different Hotels that make up the chain in each of the destinations where we have a presence, in a responsible manner and in accordance with the following principles:

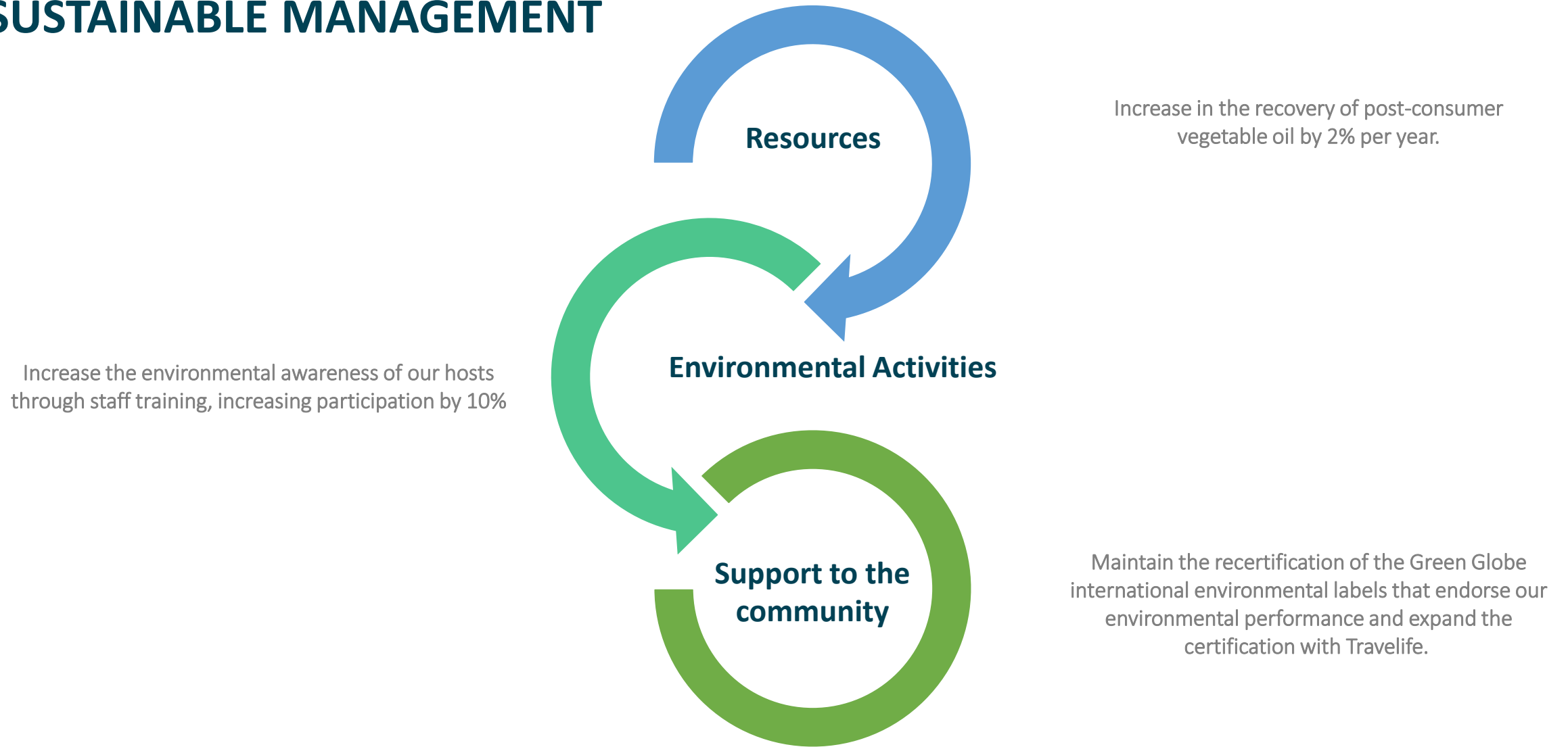
- Ensure compliance with applicable environmental legislation and regulations in the different countries where the Hotels are located.
- Respect and conserve the environment through the implementation of good environmental practices and protection of the local flora and fauna.
- Work on the correct management of waste and final disposal through recycling and reuse.
- Promote conservation activities such as: beach cleanups, mangrove cleanups and wildlife protection (where applicable).
- Implement awareness campaigns to guarantee the care of resources through staff training.
- Preserve national and cultural identity through respect for traditions, strengthening the sense of national pride and sharing its value with the outside world.
- Respect the local community by fostering an approach to integrate support and improvement actions, to the extent possible.
- Work continuously to improve internal management and BDR's sustainable initiatives to improve its environmental performance.
- Promote the involvement of stakeholders such as: hosts, guests, suppliers and service providers in the sustainable culture of BDR, communicating the best practices implemented.

At BDR we are aware that the creation and strengthening of a sustainable culture implies an evolutionary improvement process, so the commitment made is long-term.

SUSTAINABILITY POLICY POLÍTICA DE SUSTENTABILIDAD

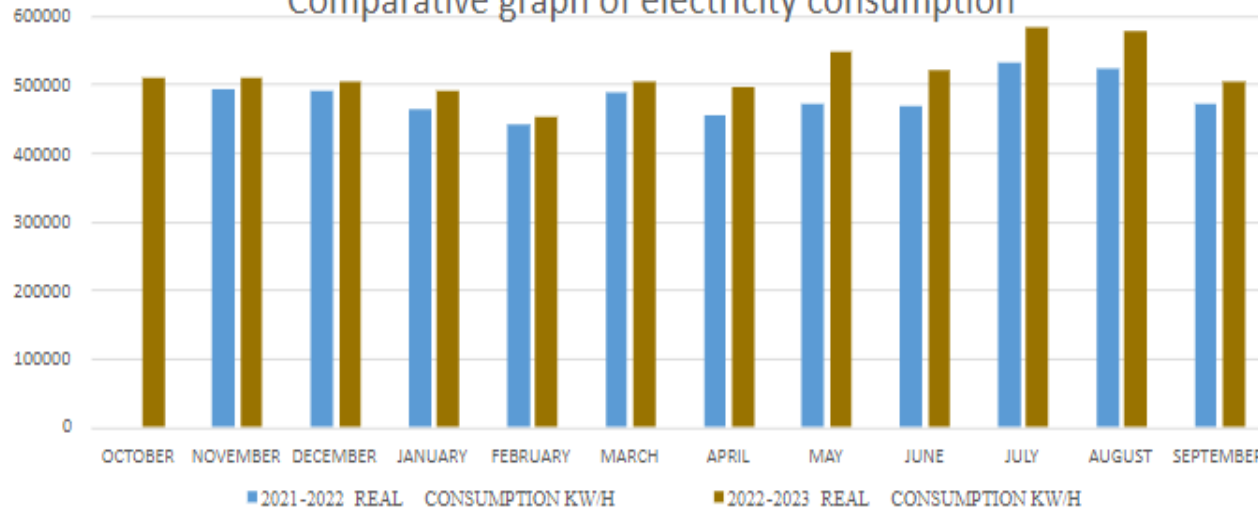


SUSTAINABLE MANAGEMENT

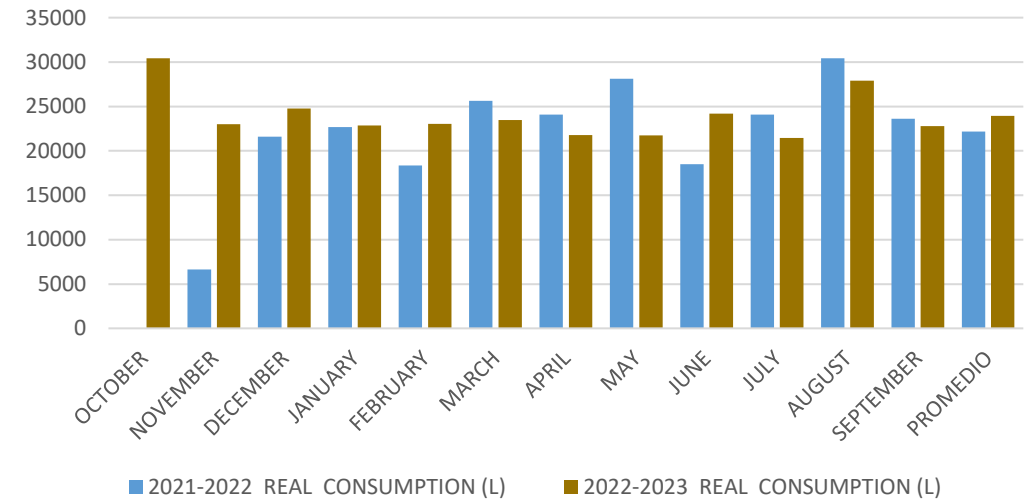


RESOURCE MANAGEMENT

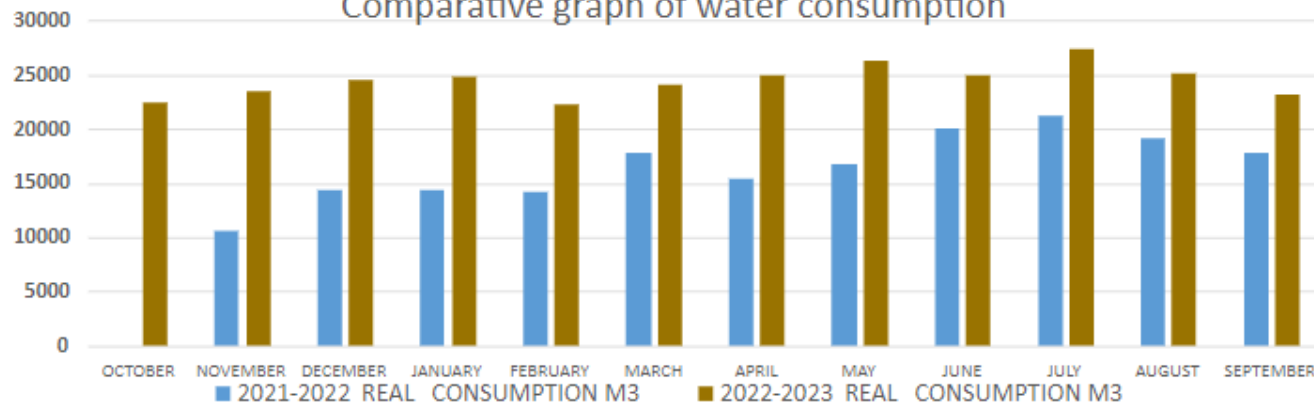
Comparative graph of electricity consumption



Comparative graph of gas consumption



Comparative graph of water consumption



How do we reduce our consumption?

- Complying with a sustainable purchasing policy that prioritizes efficient equipment and products.
- Generating a sustainable culture through training and allusive activities.
- Implementing sustainable processes such as campaigns and programs.
- Avoiding the indiscriminate use of natural resources through compliance with good environmental practices defined by the organization.

WASTE MANAGEMENT

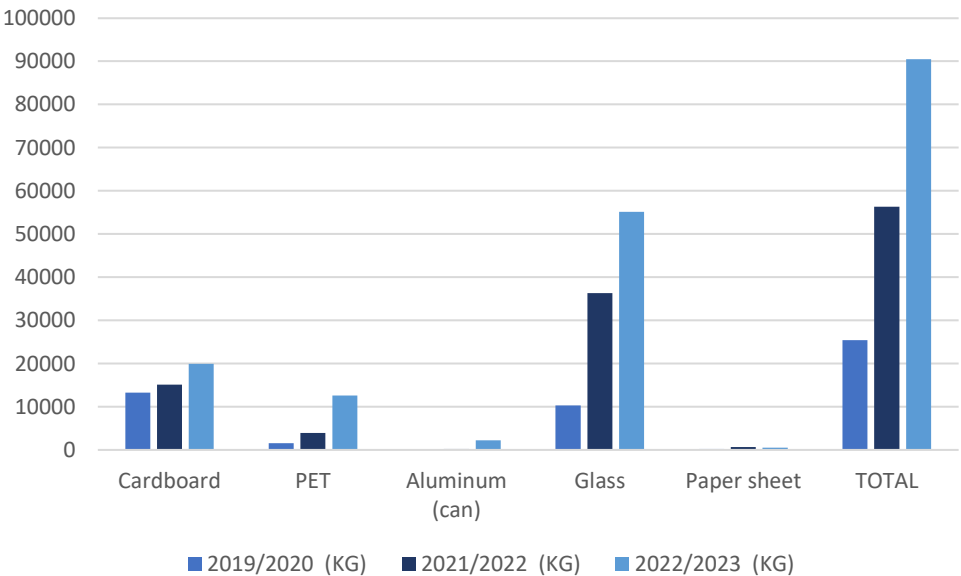
The proper management of waste has always been a central part of the commitment and environmental awareness of Royalton Hotels.

Ensure adequate separation at source and the final disposal applicable to each type of waste. Among the reduction practices are:

- Limit the use of disposable products.
- The paper is reused internally.
- Recycling bins available around the complex for use by guests and hosts.
- Definitive elimination of the use of Helium in decorative activities.
- Among others.

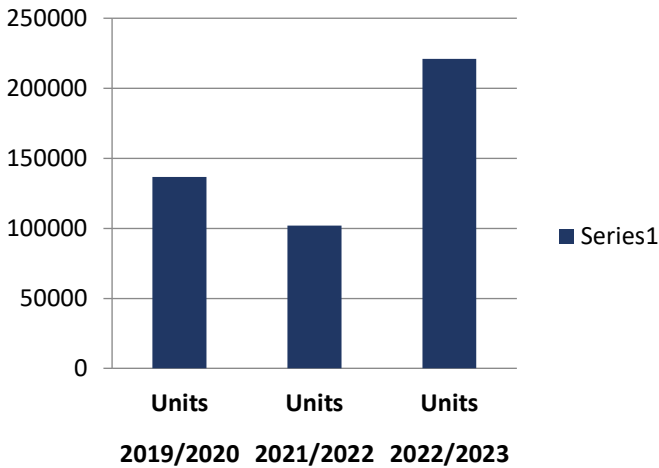
Occupation per period:
2019-2020: 70% | 2020-2021:*** | 2021-2022: 73% | 2022-2023: 77%

Annual Comparison

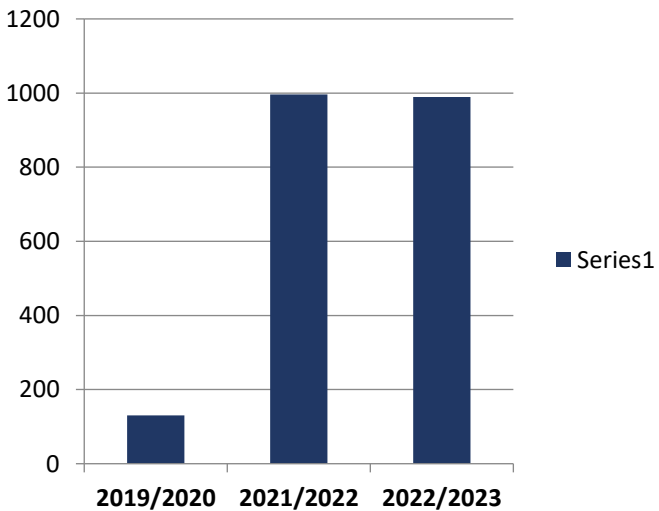


Recyclable materials, average per stay:
2019-2020: 0.39 Kg. | 2020-2021: *** | 2021-2022: 0.43 Kg | 2022-2023: 0.56 Kg

Straw Consumption Comparative



Consumption of paper sheets



*Period 2019-2020 the hotel was open for 06 months and the period 2020-2021 closed.

SUMMARY OF ACTIVITIES

	ACTIVITY	OBJECTIVE	RESULTS
SUSTENTABILIDAD	Environmental awareness campaigns	Create and improve the involvement of our hosts in the use of resources to generate a lower impact at the level of consumption of natural resources.	Participation of more than 300 hosts in Sustainable Tourism training upon entry and environmental awareness campaigns.
	Days of cleaning of areas and beach cleaning.	Create awareness about our role in maintaining adequate natural resources.	Recovery of solid waste including cigarette butts, recyclable waste and general garbage.
	Reforestation activity	Promote reforestation and care for the environment.	Reforest areas devastated by the community and waste dumped into the environment.
SOCIAL	Training in the Code of Conduct for the prevention of sexual exploitation of children and adolescents	Create awareness among hosts and guests about the importance of preventing the sexual exploitation of children and adolescents in the tourism industry.	Definition of prevention procedures and definition of corresponding channels of communication through training for all staff.
	Maintenance and pruning of public school gardening.	Collaborate on the needs of our communities.	Thousands of students will be able to enjoy a clean and organized school, without the possible danger of trees falling in stormy weather.

EVIDENCE



At Royalton we care!

VISION 2023-2024

This is just the beginning of what the Hotel Royalton Chic Punta Cana Resorts & Casino intends to achieve in the coming years. The Hotel will address new and important challenges to fulfill its mission of promoting sustainable tourism.

Collective efforts will focus on areas where Royalton Chic Punta Cana Resorts & Spa can have the greatest impact, including creating opportunities for youth, building stronger and more prosperous communities, as well as preserving the local environment through continuous improvement of the organization's environmental performance.

As a specific objective, the organization establishes the maintenance of the commitments that favor sustainable tourism, such as the code of conduct against the sexual exploitation of children and adolescents in the tourism industry, the Hotel certification with the environmental label Travelife as a sign of commitment to an increasingly sustainable destination and the Green Globe environmental program.



Royalton
CHIC Punta Cana